

FEBRUARY 24, 2022

Salve Serves

CENTER FOR COMMUNITY ENGAGEMENT AND SERVICE
SALVE REGINA UNIVERSITY

**LOOKING TO END THE
MONTH ON A
POSITIVE NOTE?**

**LOOK INSIDE FOR
SERVICE
OPPORTUNITIES,
PODCASTS, AND
MORE!**



A Word from Catherine



**"LET US TAKE ONE DAY ONLY IN HANDS
AT A TIME. RESOLVE TO DO GOOD
TODAY AND BETTER TOMORROW."**

-CATHERINE MCAULEY



Contents

- 03 Service Opportunities
- 04 Ongoing Service
- 05 Norman Bird Sanctuary Opportunity
- 06 Sprink Break Immersion
- 07 Service Plunge 2.0
- 08 SEA Donation Drive
- 09 Podcasts
- 10 Student Leader Applications
- 11 Catherine's Corner
- 12 Salve Serves Blog/Contact Us

Center for Community Engagement and Service

Feinstein "Enriching America" Program

Gerety 201,202, 203

(401) 341-2440

community.services@salve.edu



@salvecommunityservice



@salveservice



**Salve
Serves**



SERVICE OPPORTUNITIES

February-Early March



 **Friday, February 18th: MLK Center Mobile Soup Cart| 10:00am-11:00am;11:00am-12 noontime; 12 noontime-1:00pm; or from 1:00pm-2:00pm**

Volunteers are needed to hand out hot chocolate and cup noodles

 **Friday, February 18th: Salvation Army Mobile Soup Cart| 4:00pm-4:45pm**

Volunteers are needed to hand out hot chocolate and cup noodles

 **Saturday, February 26th: Gifts to Give| 11:00am-2:00pm**

 **Saturday, March 5th: Clean Ocean Access Beach Cleanup at Fort Wetherill**

Volunteers are needed at Fort Wetherill in Jamestown from 12-2pm to clean up the beach.

TO LEARN ABOUT ANY OF THESE
OR SEMESTER IN SERVICE
VOLUNTEER OPPORTUNITIES
VISIT [SALVE.EDU/SERVICE](https://salve.edu/service) OR
HERE FOR MORE DETAILS





Ongoing Service

ST. AUGUSTIN'S CHOIR VOLUNTEER

St. Augustin's Church in Newport, is in need of volunteers to help sing in the weekly Sunday 9:30AM Masses. Volunteers would be responsible for learning and listening to the recordings of music before each Sunday.

HOUSING HOTLINE: CRAFTY CROCHET VOLUNTEERS

Volunteers who know how to crochet or are willing to learn are needed weekly on Wednesdays from 1:00pm-2:00pm to help make small stuffed animals or blankets for children in need.

ON CALL- SNOW SHOVELING

Volunteers who have shovels and their own cars, are needed to be on call for shoveling local areas on the Island. Once it snows, volunteers will be notified by email or phone call with shoveling locations.

FAB GOLF NEWPORT

Volunteers are needed to help weekly on Tuesdays and Thursdays from 3:30-5:00pm. Teaching Middle School kids how to golf. Volunteers should have experience in golf or a strong interest in teaching golf.

NORMAN BIRD SANCTUARY: MABEL'S GARDEN VOLUNTEERS

Volunteers who know how to crochet or are willing to learn are needed weekly on Wednesdays from 1:00pm-2:00pm to help make small stuffed animals or blankets for children in need.

BIKE NEWPORT

Volunteers would be helping weekly with general bike cleaning, programs, and more. If you are interested in volunteering at Bike Newport contact Allyson McCalla at allyson@bikenewportri.org

WANT TO HELP YOUR
COMMUNITY?
Volunteer at the
NORMAN BIRD SANCTUARY
for their
S P R I N G C L E A N U P




FEBRUARY 22-24TH

1-2 P M

HELP SPRING CLEAN. ALL SUPPLIES WILL BE
PROVIDED FOR YOU. VOLUNTEERS SHOULD
DRESS FOR WEATHER AS THIS EVENT IS OUTSIDE.

*LOCATION: 583 THIRD BEACH ROAD,
MIDDLETOWN, RI VOLUNTEER*




*Bored? Make your break
count with...*


Service Immersion



Join us this break during March 11-15th
2022



*For more information & to apply
scan the QR Code:*



*Applications are on a first come,
first serve basis.*



**YOU WON'T
WANT TO MISS IT!**

SERVICE PLUNGE 2.0



MARCH 25-27TH

Service Plunge 2.0 provides all students with a challenging and fun opportunity to lead and learn through direct and indirect service. Participants will have the chance to volunteer with local non-profit organizations with a focus on improving the environment.

APPLY TODAY!

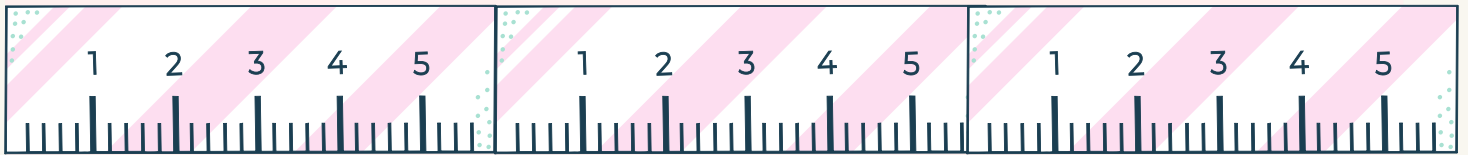


Scan me!



STUDENT EDUCATION ASSOCIATION

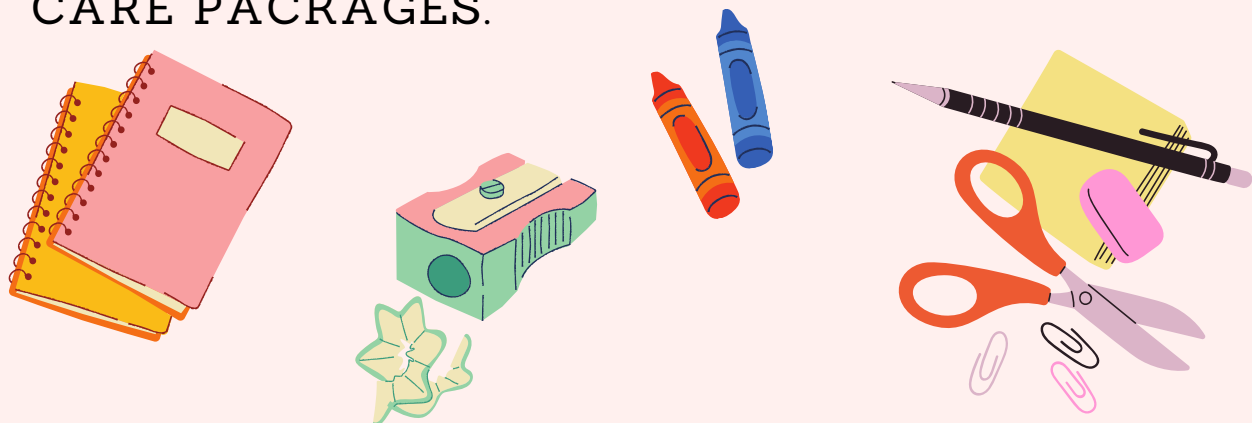
School Supply Donation Drive



Collecting items until March 11th

THERE WILL BE A BASKET/BOX OUTSIDE OF MRS. SMALL'S OFFICE ON MONDAY EVENING. (OFFICE IS ACROSS FROM THE EDUCATION DEPARTMENT OFFICE IN MCAULEY.) I

ALL ITEMS COLLECTED WILL BE MADE INTO CARE PACKAGES.



LISTEN WITH PURPOSE

BORED WITH YOUR USUAL PLAYLISTS?



THE 'KELSUNN ON AIR' SOCIAL WORK PODCAST

This program Promotes, Highlights, and Uplifts the Social Work Profession. The podcast aims to educate the general public to the undeniably vital contributions Professional Social Workers make in every aspect of our society every day.



DOIN' THE WORK: FRONTLINE STORIES OF SOCIAL CHANGE

Podcast highlighting people working for social change. Interviews with social workers and those in related fields, educators, and activists about their work and personal stories of how they got into this work.



SOCIAL WORK SPOTLIGHT

This podcast features interviews with social workers in Sydney, Australia, showcasing diverse areas of practice, social work stories, successes, and challenges and more!

**APPLY
TODAY**

**BECOME A
LEADER**



APPLICATIONS ARE STILL OPEN!



Interested in being a Service Advocate, Service Plunge Facilitator, or a Sammy's After-school Program leader?

YOU STILL HAVE TIME!

IT IS A GREAT OPPORTUNITY TO BECOME INVOLVED ON CAMPUS AND MAKE A DIFFERENCE FOR THOSE AROUND YOU AND NEW SALVE STUDENTS. FILL THE APPLICATION ON **SEAHAWK CONNECTION**

BECOME A NEW/RETURNING ORIENTATION LEADER, INTERNATIONAL STUDENT MENTOR, RESIDENT ADVISOR, NEW/RETURNING FYT PEER MENTOR, PEER WELLNESS EDUCATOR, SERVICE ADVOCATE, DAY OF SERVICE LEADER, SERVICE PLUNGE FALL FACILITATOR, SAMMY'S AFTER-SCHOOL PROGRAM AND/OR MERCY IN MOTION LEADER



Scan to learn how you
can apply now

Catherine's Corner

Did you
know?

After her death, her Sisters of Mercy organization expanded its reach to New Zealand, Argentina, Australia, and the United States and, by the early 21st Century, had grown to a membership of approximately 10,000.

She was so joyful as a child that her family called her "Euphrosyne," Greek for "joy."

Catherine Mcauley
is a Libra.

Learn More of her story at
<https://www.mercyworld.org/catherine/>



Salve Serves Blog

Attention All Service Advocates

Please reach out to...

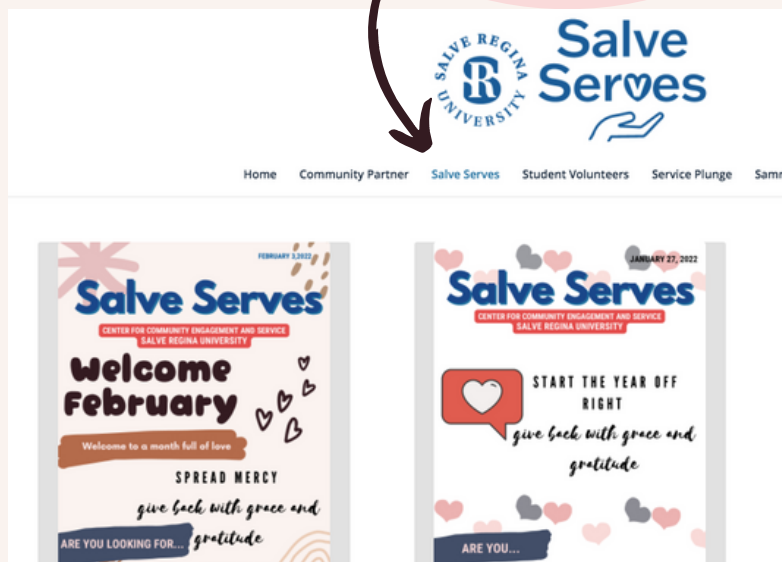
Kaitlyn Brilhante
(kaitlyn.brilhante@salve.edu)

or

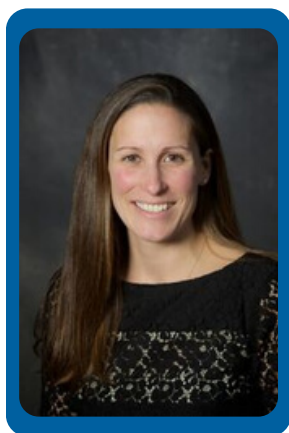
**The Center for Community
Engagement and Service**
(community.services@salve.edu)

...so that you can be featured on one
of our posts during this upcoming
week and Share the Love Week!

Salve Serves
Magazines are
now available for
reference on our
blog!!



Contact Us:



Kelly Powers

Director of Community
Engagement and Service,
FYT Instructor

kellyj.powers@salve.edu



Kathleen Rendos

Assistant Director of Community
Engagement and Service,
FYT Instructor

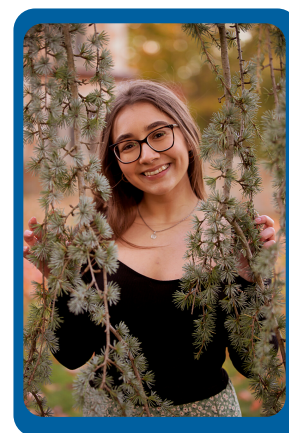
kathleen.rendos@salve.edu



Kaitlyn Brilhante

Coordinator for
Service Leadership and
Community Engagement

kaitlyn.brilhante@salve.edu



Camilla Watts

Intern for Community
Engagement and Service,
Treasurer of Willow Magazine

camilla.watts@salve.edu