

JANUARY 20, 2022

# Salve Serves

CENTER FOR COMMUNITY ENGAGEMENT AND SERVICE  
SALVE REGINA UNIVERSITY

WELCOME



BACK

**What's Inside**

**...New Year ...New Service ...New Fun!!**



# A Word from Catherine

**"I HAVE GREAT CONFIDENCE IN YOU TO  
DO WHAT YOU THINK BEST.  
STATE YOUR OPINION AND ALWAYS  
ACT WITH COURAGE."**

**-CATHERINE MCAULEY**



## Contents

- 03 Opportunities
- 04 Want something to do for Spring Break?
- 05 Want to be a SP2.0 Participant?
- 06 Learning Unlimited Orientation Evening
- 08 Catherine's Corner
- 09 Salve Serves Blog/Contact Us

## Center for Community Engagement and Service

Feinstein "Enriching America" Program

Gerety 201,202, 203

(401) 341-2440

[community.services@salve.edu](mailto:community.services@salve.edu)



@salvecommunityservice



@salveservice



**Salve  
Serves**



# Opportunities

## January

**Friday, Jan. 21st (MLK DAY OF SERVICE EVENTS):**

**Edesia| 7:00am-12:00 noontime**

**MLK Center Mobile Coffee Shop Prepping| 9:00-10:00am**

**MLK Read-a-Loud at Thompson Middle School| 9:30-11:30am**

**Salvation Army Sock Decorating| 10-11:00am**

**MLK Center Mobile Coffee Shop| 10:00-11:00am**

**McKinney Shelter Meal Prep| 11:00am-1:00pm**

**MLK Center Mobile Coffee Shop| 11:00-12:00 noontime**

**MLK Center Mobile Coffee Shop| 12:00 noontime-1:00pm**

**MLK Center Mobile Coffee Shop| 1:00-2:00pm**

**Donovan Manor Winterizing Yard Cleanup| 1:00-2:00pm**

**Turning Around Ministries Grab and Go Bags| 1:00-2:00pm**

**Housing Hotline Grab and Go Bags| 2:00-3:00pm**

**Salvation Army Mobile Coffee Shop| 4-4:45pm**

**Saturday, Jan. 22nd: Gifts to Give| 11:00am-2:00pm**

**Friday, Jan. 28th: Edesia| 7:00am-12:00 noontime**

\*TO LEARN ABOUT ANY OF THESE  
OR SEMESTER IN SERVICE  
VOLUNTEER OPPORTUNITIES  
VISIT [SALVE.EDU/SERVICE](http://SALVE.EDU/SERVICE) OR  
HERE FOR MORE DETAILS





# Want something to do for Spring Break?...

*Apply Today!*  
Spring Break Service Immersion  
March 11-15th 2022



For more information & to apply scan the QR Code:  
*Applications are on a first come, first serve basis*



Feinstein Enriching America Program  
Center for Community Engagement and Service  
Gerety 201 • (401) 341-2440 • [CommunityServices@Salve.edu](mailto:CommunityServices@Salve.edu)  
[facebook.com/SalveCommunityService](https://www.facebook.com/SalveCommunityService) • Instagram: [SalveService](#) • Twitter: [@SalveService](#)



# Want to be a... SP2.0 Participant?

*Apply to be a*

**SERVICE PLUNGE 2.0 PARTICIPANT**



**Applications are open. Apply here today. →**

***Save the Date: Service Plunge 2.0 April 8-10, 2022!***



Sponsored by: Feinstein Enriching America  
Center for Community Engagement and Service - Gerety 201, 202, & 203  
Community.Services@salve.edu - Phone: 401-341-2440  
Facebook.com/SalveCommunityService Instagram: @SalveService



# Learning Unlimited Orientation Evening

## Learning Unlimited



Making a Difference at  
Salve Regina University



*Are you looking for an opportunity to **make a difference, earn a credit, or complete your required community service hours?** Consider joining Learning Unlimited!*



### For More Info

Please join us for an orientation session on **January 27th at 6pm in McAuley, Room 105** or contact **Michele Banks - 401-862-0403**

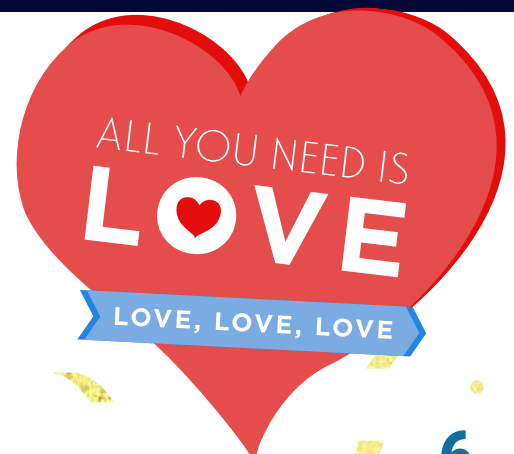
[michele.banks@salve.edu](mailto:michele.banks@salve.edu)

*Come find out if it's a match for you!*

Learning Unlimited is designed to promote a welcoming, inclusive and accessible environment for individuals with intellectual and developmental disabilities. The students form dynamic teams where mutual lifelong learning, connection and fun happens.

*Made possible through the generous support of the John E. Fogarty Foundation*

LEARN MORE ABOUT  
LEARNING UNLIMITED  
ON OUR BLOG! →





## What is Learning Unlimited?

Learning Unlimited, an initiative through the education department is a fun, experiential, life-changing, and paradigm-shifting opportunity. It is designed to promote a welcoming, inclusive and accessible environment for individuals with intellectual and developmental disabilities. Salve students and community students form dynamic teams where mutual lifelong learning, connection, and fun transform perspectives and lives ultimately creating a ripple effect.

### Who Participates?

Learning Unlimited is especially great for...

- Social work
- Business
- Sociology
- Psychology
- Administration of justice
- Nursing
- Education

### Options

- Take for credit
- Earn community service hours
- Join for fun!



### Student Leader Opportunities

Service Advocates commit 100 hours to Learning Unlimited to assist in facilitating. Social work students can join as interns and fulfill service learning requirements.

### When Do We Meet?

Learning Unlimited meets on **Thursdays from 6-8 pm** but the program also offers a five-week option that meets on Wednesdays.

***"Every week, I look forward to Thursday nights when we meet, because no matter how my day was, they are always there to brighten it. The love and support from everyone involved with Learning Unlimited are like no others."***

- Jillian Gaffga '23, Service Advocate

### For More Information...

Contact Michele Banks at [michele.banks@salve.edu](mailto:michele.banks@salve.edu)



**Made possible through the generous support of the John E. Fogarty Foundation**



# Catherine's Corner



Greetings All,

Have you ever wondered what it would be like to try something new, but may be hesitant to take the first step in the direction of change? As we all begin a new semester, within this academic year, may all students, faculty, and staff find the courage to try new things and be willing to have the mindset to help others. Whether it is through an occasional service opportunity or ongoing project with a community partner site, the affect remains the same. Hopefully these three following opportunities will help spark some interest for you to try something new in this New Year. In doing so, you will simultaneously be helping someone or some organization within your community in a very meaningful way. Until next time. -Catherine

## 1. **St. Augustin's Choir Volunteer**

*St. Augustin's Church in Newport, is in need of volunteers to help sing in the weekly Sunday 9:30AM Masses. Volunteers would be responsible for learning and listening to the recordings of music before each Sunday.*

## 2. **Bike Newport Volunteer**

*Volunteers would be helping weekly with general bike cleaning, programs, and more. If you are interested in volunteering at Bike Newport contact Allyson McCalla at [allyson@bikenewportri.org](mailto:allyson@bikenewportri.org)*

## 3. **On Call: Snow Shoveling Volunteers**

*Volunteers who have shovels and their own cars, are needed to be on call for shoveling local areas on the Island. Once it snows, volunteers will be notified by email or phone call with shoveling locations.*

FOR MORE DETAILS SCAN HERE





# Salve Serves Blog

Have you recently attended, or even hosted a service opportunity at Salve or on Aquidneck Island? If so, we want to highlight and share your service experience with the rest of the Salve community.

Salve Serves  
Magazines are  
now available for  
reference on our  
blog!!

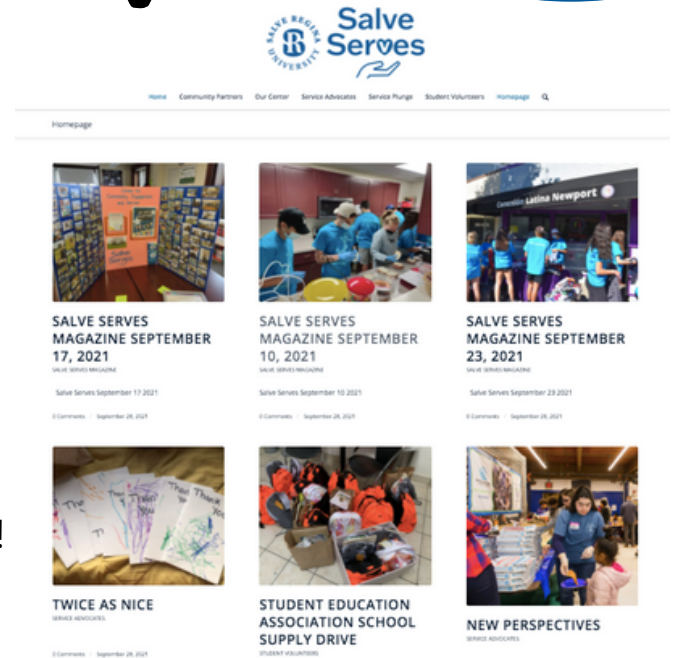
Please feel free to reach out to...

**Kaitlyn Brilhante**  
([kaitlyn.brilhante@salve.edu](mailto:kaitlyn.brilhante@salve.edu))

or

**The Center for Community Engagement and Service**  
([community.services@salve.edu](mailto:community.services@salve.edu))

...so that you can be featured on one of our next posts!



## Contact Us:



**Kelly Powers**  
Director of Community  
Engagement and Service,  
FYT Instructor

[kellyj.powers@salve.edu](mailto:kellyj.powers@salve.edu)



**Kathleen Rendos**  
Assistant Director of Community  
Engagement and Service,  
FYT Instructor

[kathleen.rendos@salve.edu](mailto:kathleen.rendos@salve.edu)



**Kaitlyn Brilhante**  
Coordinator for  
Service Leadership and  
Community Engagement

[kaitlyn.brilhante@salve.edu](mailto:kaitlyn.brilhante@salve.edu)